

iWear[®]

Video Headphones



USER MANUAL v2

FOR THE LATEST DRIVERS, SUPPORTED VR TITLES,
AND ACCESSORIES, VISIT:

vuzix.com

VUZIX[®]

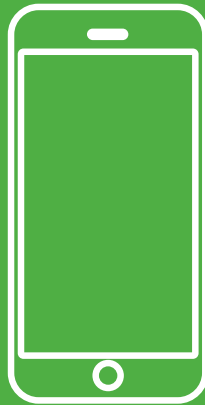
View the Future[®]

©Vuzix 2016. This user manual is subject to change.
Please read the safety section before using this product.
All trademarks belong to respective owners.

412PB0002-01- iWEAR USER MANUAL

CONGRATULATIONS ON YOUR NEW iWEAR® VIDEO HEADPHONES

Today's Most Advanced Mobile Entertainment Display



HD + 3D IN FULL STEREO SOUND. SEEING AND HEARING IS BELIEVING.

After all the research and development, the steampunk prototypes, and the awards won for the finished product, this is where the action really begins—with you. So get ready for an immersive entertainment experience like you've never seen—or heard—before.

GAMING

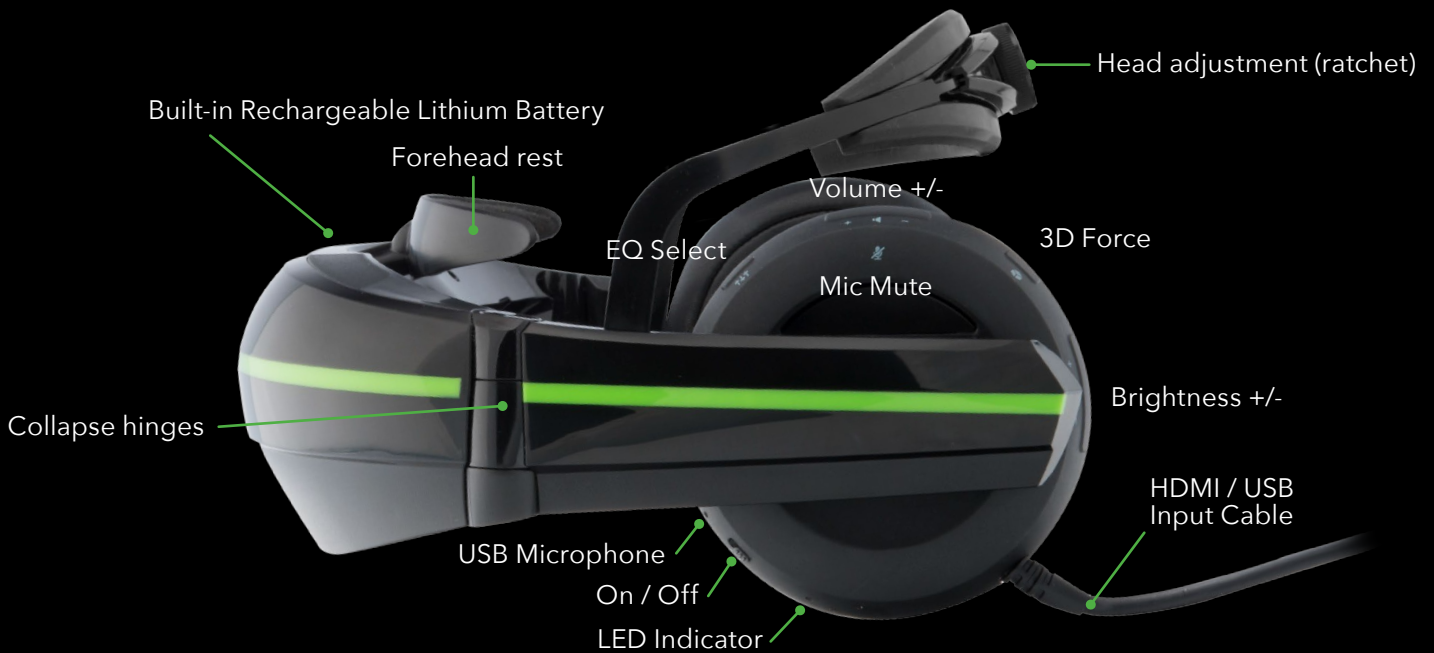
**MOBILE
ENTERTAINMENT**

**VIRTUAL
REALITY**

MOVIES

KNOW YOUR **iWEAR**

Set your sight, sound and comfort ON peak perfection



LED Indicator

- RED LED
 - ON = Charging
 - OFF = Not charging
- BLUE LED
 - ON = Unit Powered On
 - OFF = Not Powered On
 - FAST BLINK = Low battery, operational
 - SLOW BLINK = Low battery, not operational until charged

Box Contents

- Carrying pouch
- Immersive light-shield
- HDMI/USB/DC power cord
- Quickstart guide, warranty and safety instructions

VIDEO

GET AN EYEFUL IN **DUAL** DISPLAY (+16 MILLION COLORS)

Your iWear® Video Headphones boasts a pair of dazzling high-definition displays of a million color pixels each and a field of view wide enough to put you front-row in the action and keep you there.



ADJUSTING 3D VIEWING

Locate the 3D Force button on the control band of your video headphones. Press to activate 3D display.

ADJUSTING BRIGHTNESS

Locate the Brightness button on the control band of your video headphones. Press "+" to increase and "-" to decrease brightness. Click once for incremental adjustment or hold in for continuous adjustment.

SPECS

- Dual 16:9 HD displays (1280 x 720)
- 24-bit true color
- Input resolution support up to 1080p
- 55° diagonal field of view
- Standard HDMI 2D and 3D video support (side-by-side, over-under, and frame packed)



What is 3D Force?

An innovative component of iWear Video® Headphones, 3D Force can play side-by-side or top-bottom 2D videos in 3D.

AUDIO

HEADPHONES & MICROPHONES **UNITE**

Your iWear's headphones are padded for maximum comfort and noise-reduction, to deliver a big, immersive sound you'll want to tell everyone about through its built-in dual microphones.

ADJUSTING VOLUME

Locate the Volume button on the control band of your video headphones. Press "+" to increase and "-" to decrease volume. Click once for incremental adjustment or hold in for continuous adjustment.

MUTING MICROPHONE

Locate the Mic Mute on the outer side of your video headphones. Press to turn off microphone.

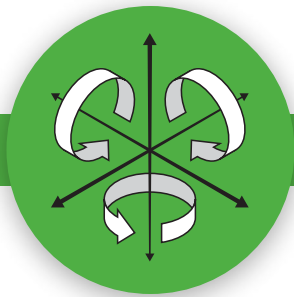
ADJUSTING EQUALIZER

Locate the Equalizer button on the control band of your video headphones. Press to select your choice from one of the four presets; None, Movie, Rock, Bass.

SPECS

- Driver unit: 40 mm, dome type (CCAW adopted) diaphragm
- Noise-isolating over-the-ear design
- Electronic equalization with presets
- Sensitivity (db): 100 dB/mW





TRACKING

SEE WHERE YOU LOOK, THANKS TO **3 AXIS** TECHNOLOGY

With its integrated tracking system, iWear® video headphones make sure that while your eyes are feasting on your favorite gaming or virtual world, any turn of your head is naturally matched in real-time—to increase the scope of your vision and the intensity of your viewing experience.

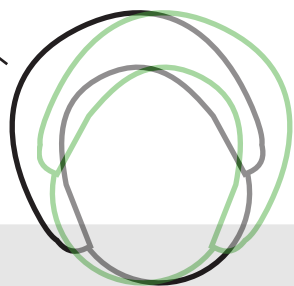


SPECS

- 3 Axis Gyro,
3 Axis Accelerometer
- 3 Axis Magnetic Sensor
(compass)
- Supports gaming engines like
Unity 3D and OSVR alliance

VR tracks your head's motion using VR software. To get the latest drivers and to check for compatibility, please visit:

www.vuzix.com/downloads

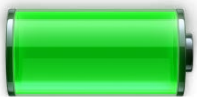


What is 3-Axis Technology?

Combining the movement of a gyroscope, the directional navigation of a compass, and a speed measure of an accelerometer, 3-axis technology essentially keeps track of optic motion to match the orientation of real movement with its mirror effect in virtual or augmented reality. Which is all just another way of saying “wow, that’s pretty cool.”

BATTERY-POWERED AND READY FOR THE ROAD

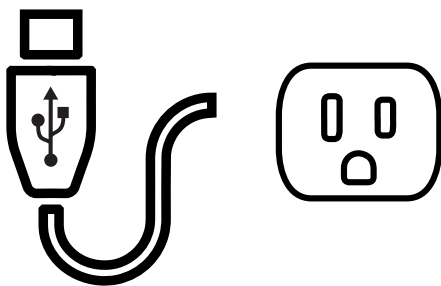
An internal rechargeable battery along with a smart design for serious portability means your iWear® video headphones lets you step away from the couch and follow your entertainment wherever your laptop or mobile device takes you.



CHARGING BATTERY

Using the included AC adaptor, plug your USB cable into the port. A full recharge usually takes 3 hours to charge if it's turned off and plugged in to an AC adapter or 2A USB source.

Continuous power over USB requires a 1.5A source.



USING YOUR LIGHT SHIELD

Clip on the display shield included with your iWear® video headphones to maximize visibility in bright outdoor sunlight.

SPECS

- Internal battery delivers up to 3 hours continuous power
- USB port for battery charging or external continuous power (> 1 amp required)

SET UP

ADJUSTING FOR COMFORT

A sleek, balanced design evenly distributes the weight of your video headphones between the front and back of your head—without resting on your nose—to maximize your comfort and make your iWear® iWearable for hours on end.

Forehead Rest

Place iWear against forehead

1



Adjust Head Ratchet

Place head strap on the back of the crown and turn ratchet clockwise to secure fit

2 Adjust Ear Phone Slide

Slide the Ear Phones to fit over ears in a comfortable position

SPECS

- 3-point comfort adjustment
- Fits most adult head sizes
- Can be worn over prescription glasses



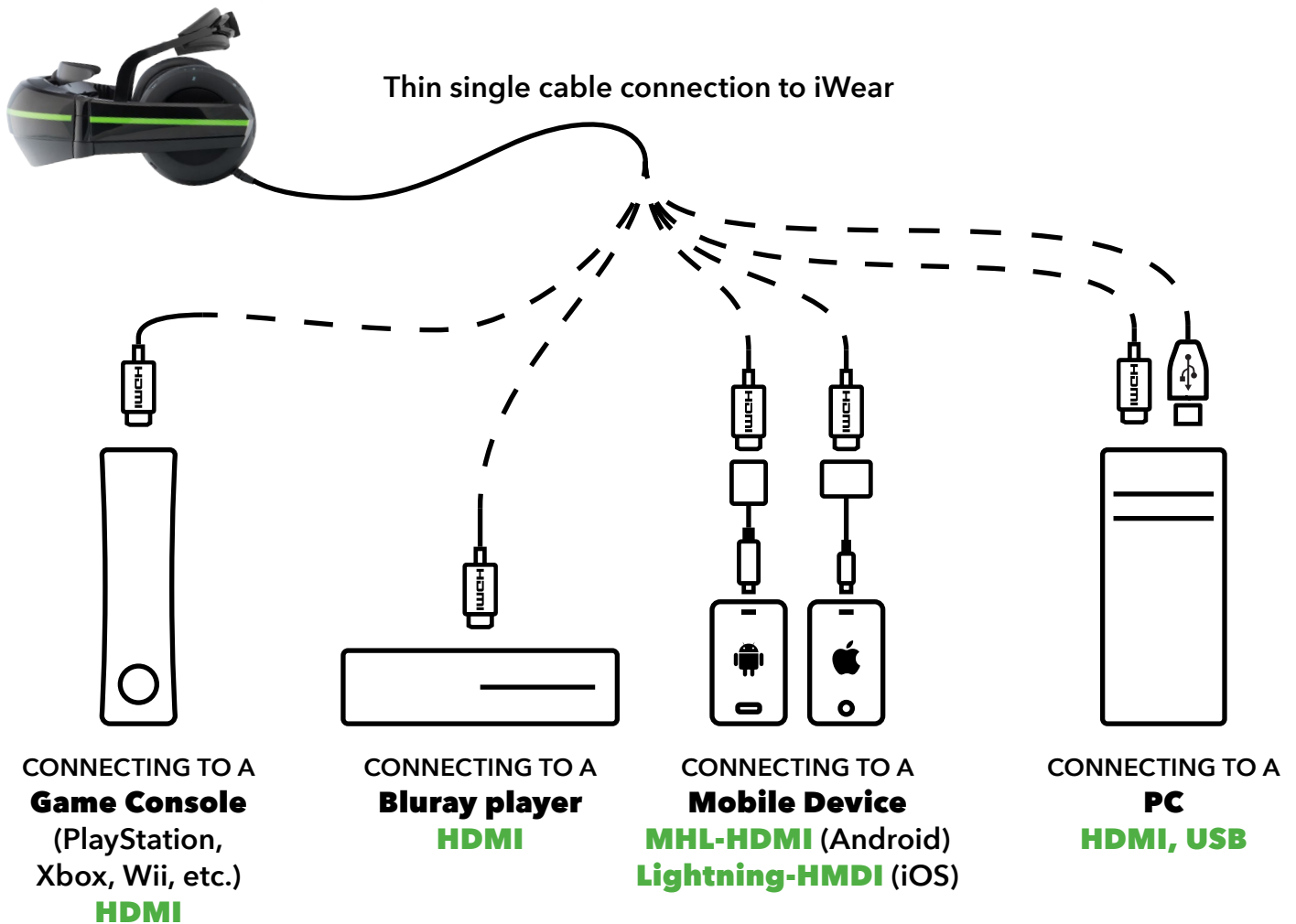
Comfort is no pressure.

The unique “floating” display design of iWear® minimizes contact with your face and keeps pressure off the bridge of your nose for a superior immersive experience.

SET UP

CONNECTING TO YOUR DEVICE

Plug in and play—it's that easy using an HDMI or USB connector to hook up your iWear® video headphones to the device of your choice.



HDMI™

High-Definition Multimedia Interface, is an uncompressed, all-digital audio/video interface that supports standard, enhanced, or high-definition video plus multi-channel digital audio—all on a single line. No more cable spaghetti!

SET UP

CONNECTING TO YOUR PC

Using your iWear® video headphones with your PC opens up a world of movie viewing, gaming, and third-party application of 3-axis tracking technology.

GETTING STARTED

- Connect the iWear® console to your PC with the included HDMI/USB cable. If the internal battery needs charging, connect the included AC adaptor.
- Press the Power button on the iWear® console until the LED indicator light turns on. See page 2 of the User Manual LED indicator light chart.

INSTALLING DRIVERS

- Make sure your PC is connected to the Internet.
- Once you power up the iWear® console, your PC should automatically begin to download the appropriate video and audio drivers from Vuzix, as indicated by the active green progress bar appearing at the bottom of your desktop. A pop up notification in the system tray will indicate drivers are installed.

For 3D movie or secondary monitor viewing, your iWear video headphones are now ready for use with your PC. See page 7 of the User Manual for fitting adjustments. Enjoy the show!



SET UP

CONNECTING TO YOUR PC

For gaming and third-party application, follow these directions for configuring your PC to support virtual reality head tracking and stereoscopic 3D video:

INSTALLING iWEAR SOFTWARE

- Make sure your PC is connected to the Internet.
- Open your Internet browser and go to the Vuzix.com download page at: https://www.vuzix.com/support/Downloads_Drivers
- Select “iWear Video Headphones” under “Browse Categories”.
- Download Vuzix VR Manager.

VR Manager Setup

- Select the VR Manager setup icon (on desktop or in download tray).
- When prompted to allow elevated permissions while running the application, select Accept to open Setup Wizard.
- Select Accept License Agreement and then Next to begin install.
 - If prompted to install Microsoft DirectX®, select Accept and then Next.
 - Follow the progress window to install/update DirectX®. When installation is complete select Finish.
- When VR Manager Setup Wizard is complete, select Finish.

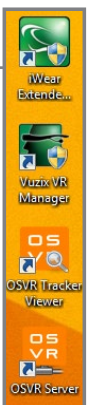
iWear Firmware Update (only necessary when preloaded firmware is out of date).

- From the Vuzix.com iWear® Video Headphone page, download Firmware Update.
 - Select the Firmware Update icon (on desktop or in download tray).
 - When prompted to allow elevated permissions while running the application, select Accept to install.
-

USING iWEAR SOFTWARE

After installing and setting up the VR Manager, you will find the following four icons on your PC desktop:

- **iWear Extended Calibrator** for tracking calibration and analyzing tracker performance.
- **Vuzix VR Manager** for connecting VR game firmware, tracking calibration, and management.
- **OSVR Tracker Viewer** for demo viewing of OSVR gaming software.
- **OSVR Server** for third-party gaming and software development.



SET UP

CONNECTING TO YOUR PC

CALIBRATING HEAD TRACKING

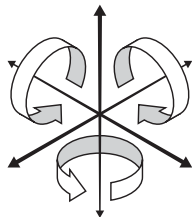
Before using your iWear® video headphones, you will need to calibrate the magnetometers for sensing the surrounding magnetic field and providing an absolute reference; and the gyroscopes for sensing rotational motion. Vuzix software provides you with two options for calibration.

OPTION 1

iWear Extended Calibrator (recommended when calibrating your iWear Video Headphones only) - open iWear® Extended Calibrator and accept permissions to run. The control panel will appear on your screen.

STEP ONE: MAGNETIC CALIBRATION

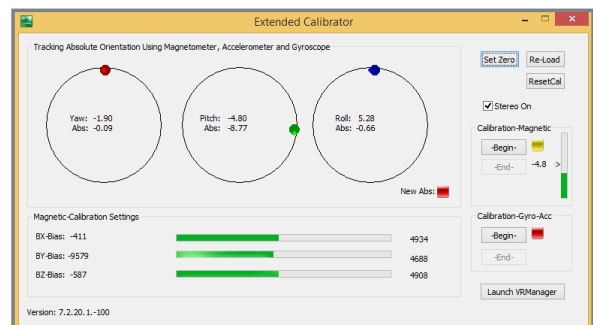
1. Make sure iWear® video headphones are fully connected and powered.
2. Extend the headband on your iWear® to pull the earcups away from the dual viewing monitor. Keeping the earcups apart and separated from the viewing monitors during calibration helps optimize results, since magnetic tracking is influenced by ambient magnetic fields such as those from the magnets built into the earcups.
3. Find the Calibration-Magnetic controls on the control panel and select Begin.
4. While holding iWear®, slowly rotate the console a full 360°, along the three X, Y, and Z axes to ensure the maximum range of detection as the Magnetic-Calibration progress bars adjust to optimal measure.



5. When the three progress bars stop moving, usually at approximately the midway measure, stop rotating the unit and select End to complete calibrating magnetometers.

STEP TWO: GYROSCOPE CALIBRATION

1. Set iWear® on a flat, stable surface. Do not move the console while calibrating gyroscopes.
2. Find the Calibration-Gyro-Acc controls on the control panel and select Begin.
3. Run gyroscope calibration for at least five (5) seconds. The colored orientation markers indicating Yaw, Pitch, and Roll will revolve in their circles.
4. Select End to complete calibrating gyroscopes. The control panel should show the following result:

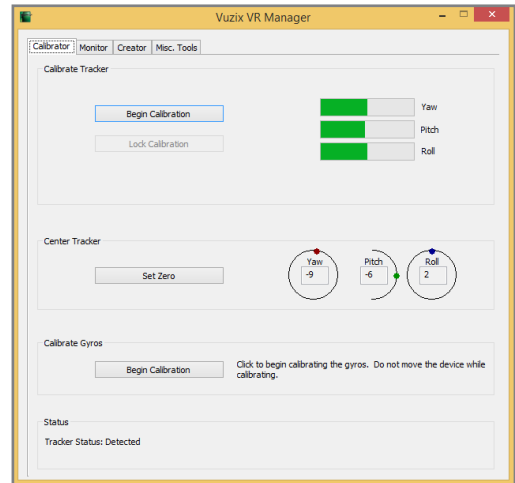


5. Put on your iWear® video headphones.
6. Find and select the Set Zero button on the control panel.
7. Close iWear® Extended Calibrator.

CONNECTING TO YOUR PC

OPTION 2

Vuzix VR Manager (recommended when also configuring titles with native Vuzix support) - open Vuzix VR Manager and accept permissions to run. The control panel will appear on your screen:



TRACKING CALIBRATION

Select the Calibrator tab. Follow the instructions you'll find in the User Guide for VR Manager on the Vuzix.com support/download page at: https://www.vuzix.com/support/Downloads_Drivers

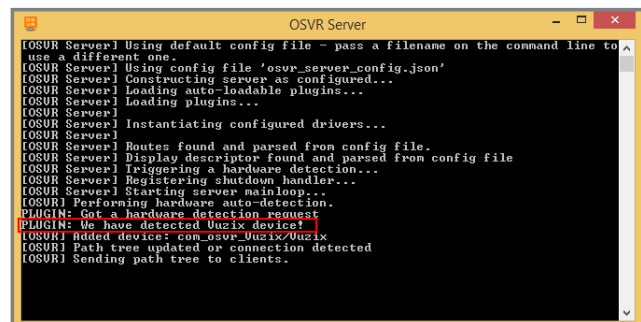
SUPPORTED GAME TITLE MONITORING

1. Select the Monitor tab for a list of native Vuzix-supported game titles. (For a complete list with visuals see Selected Titles at <https://www.vuzix.com/Products/iWear-Video-Headphones>)
2. Find the title of your choice and if needed, select the corresponding button to detect it on your system.
3. For more, see the User Guide for VR Manager on the Vuzix.com support/download page at: https://www.vuzix.com/support/Downloads_Drivers

OSVR Support

To run OSVR games and software, you must first make sure your iWear® video headphones are detected. (For additional support regarding OSVR setup and development, please visit <https://osvrdevportal.atlassian.net/wiki/display/DD> or <http://www.osvr.org/forum/>)

1. Open the OSVR Server application
2. In the coding screen, look for the following: "PLUGIN: We have detected Vuzix device!"
3. If the detection notice does not appear, you will have to recalibrate. Close the OSVR Server application and then recalibrate using the iWear® Extended Calibrator application (see above for directions). Once recalibration is complete, reopen the OSVR Server application.



TROUBLE SHOOTING

ALL YOUR PROBLEMS, **SOLVED**

Any operational issues you might have with your iWear® video headphones are easily resolved by simply turning the device off and back on again.

Still having problems? Follow these simple procedures:

BATTERY CHECK

Remove all connections, including power and HDMI. Make sure the power switch is on. A fast-blinking blue LED indicates that your device is at warning level and will shut down if not promptly connected to a power source. A slow blinking blue LED indicates a battery below shutdown level. Either way, you'll need to connect to a power source to run.

POWERING UP

Once you connect to either a DC or USB power source, the red LED indicates charging in progress. Remember, your iWear video headphones need at least 1.5A of current from a power source to run. A DC source is the best option to supply this, but there are some USB sources that can also do this. The red LED will remain on as long as you are connected to a power source.

HDMI CONNECTION

Using the HDMI cable, connect your device to your preferred HDMI source. Your connection should be detected immediately. Place on your device to verify operational video and audio. If there's a problem, recheck your HDMI connection and verify your source is on and operating properly.

